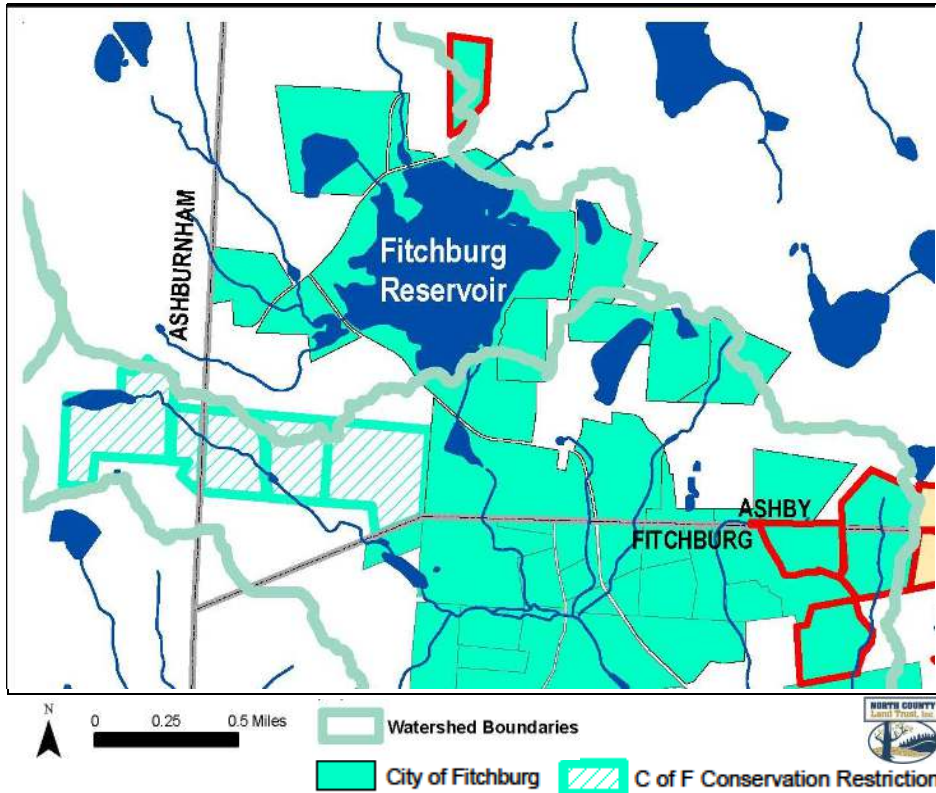




## 2009- Fitchburg Reservoir Project

In 2009, NCLT facilitated the City of Fitchburg's first purchase of **conservation restrictions** on private land in its northern water supply watershed, conserving 161 acres of sensitive watershed land in Ashby and Ashburnham.



Through NCLT's efforts and those of its partners, the City of Fitchburg was able to protect land valued at more than \$1.5 million at a cost to the City of approximately \$100,000.



Fitchburg Reservoir as seen from Jewell Hill in Ashburnham.



In addition to protecting the watershed, the project protects a scenic landscape including Rice Pond and Jewell Hill in Ashburnham and the central part of the Crocker Farm in Ashby and Ashburnham.

The project protects some of the most sensitive areas of the watershed, including tributaries and ponds within water supply protection Zone A.

